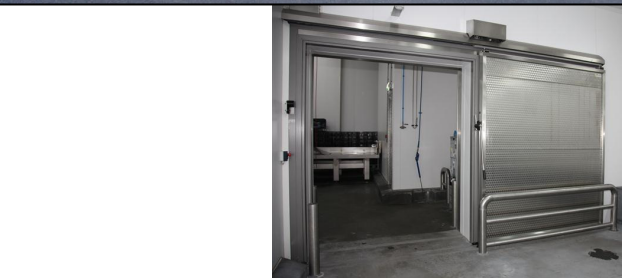




Roma-door type KSD/1010-80-FC

Application

Roma cool sliding door type KSD/1010-80-FC is a foodcare and low maintenance door. This foodcare door is entirely designed according to hygienic guidelines, with robust sloping sides and rounded shapes of parts, which remain free of dirt and rinse water. No unnecessary cracks. Stainless steel welded joints in the corners. Application is most suited in food processing areas with temperatures above zero degrees and high demands on the quality of finish.



Doorleaf

Doorleaf fabricated by assembled sandwichpanels framed by a welded smooth stainless steel profile with thermal bridge break.

- Outside finishing : sendzimir galvanised steelplate, covered with hard PVC foodcare foil, thickness 150 micron, in colour RAL 9001 (cream-white).
- Inside finishing : sendzimir galvanised steelplate, covered with hard PVC foodcare foil, thickness 150 micron, in colour RAL 9001 (cream-white).
- Thickness doorleaf : 80 mm.
- Insulation : PIR-hardcore foam, volume weight ca. 40 kg/m³. R-value approx. 3,7 (m².K/W).
- Sealing : all around by double rubber profile.

Doorframe

- Doorframe : welded stainless steel profile with hard plastic black thermal bridge break.
- Mounting : in panel wall with counter-doorframe

Door fitting

- Railsystem : anodised aluminium railbeam, comprehend with "fall in" so that the door leaf will be pressed against the doorframe by its own weight when closing. This assures a vapour tight sealing.
- Capping : integrated in the railbeam.
- Floorguide : U-profile integrated in doorleaf and guiding bracket installed on the floor.
- Openers : at both sides.
- Slide direction : DIN left or DIN right.

Options at additional prices

- Doorleaf in 304 circle-brushed stainless steel sheet .
- Lock.
- Stainless steelbeam with rubber bumpers at both ends.
- Threshold.
- Heating in doorframe.
- Stainless steel window frame size 400 x 600 mm. with insulated float glass (4-15-5) provided with anti-splinter foil at both sides.
- Railbeam transit through the wall.
- Automatic operation by PLC-frequency controller with several operation possibilities, like easy opening.

roma
isolatiesystemen

